



Description

- MAPLE is proud to offer the 20 Nm damper actuator of the NACA... 20 (S) Series designed specifically application into the HVAC market.
- MAPLE high quality damper actuators have been designed for use with air damper, butterfly valve, characterized ball valve and globe valve with the use of special adapter

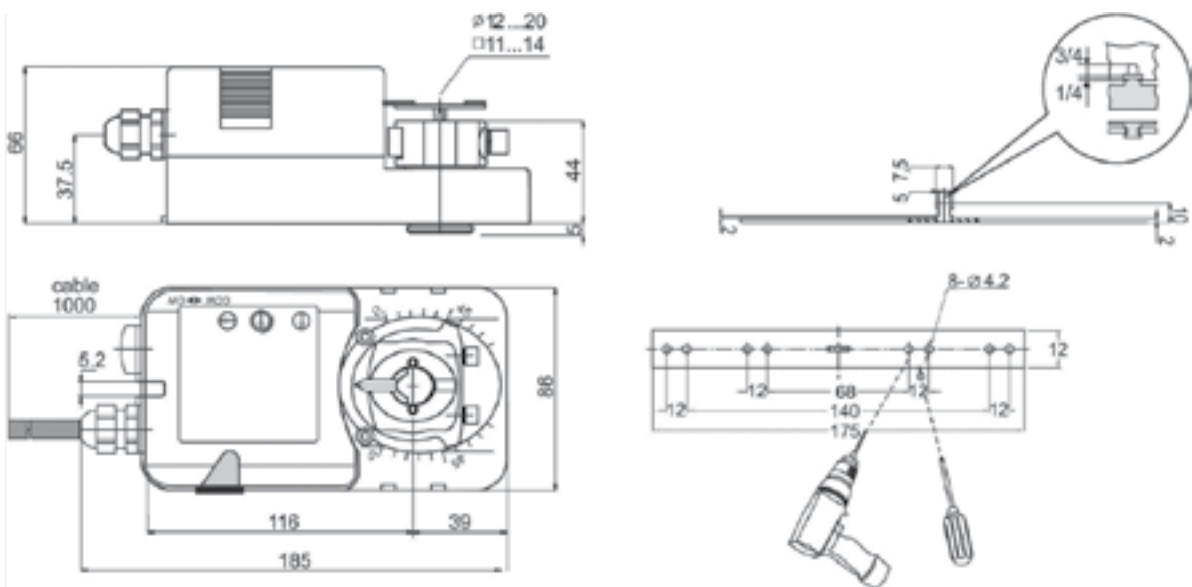
Features

- Torque 20 Nm
- Nominal Voltage AC/DC 24V and AC 230V
- Universal Adapter $\varnothing 12...20$ mm / $\varnothing 11...14$ mm
- Manual Over-ride Push button when required.
- Selectable Direction of rotation CW/CCW
- 2 Adjustable SDPT Auxiliary switch when re-quested
- Actuator available with 1m Cable connection

Model Selection

Torque	Running Time	Power Supply	Auxiliary Switch	Model / Type
20 Nm	70...120 sec	AC/DC 24V	No 2 x SPDT	NACA 1.1-20 NACA 1.1-20S
20 Nm	70...120 sec	AC/DC 230V	No 2 x SPDT	NACA 1.1-20 NACA 1.1-20S

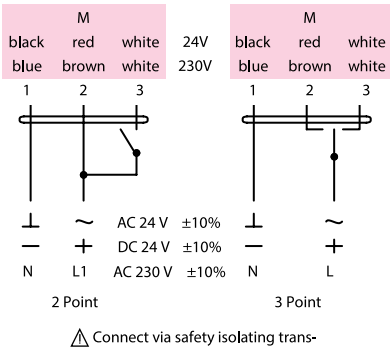
Actuator Dimensions *Unit : mm*



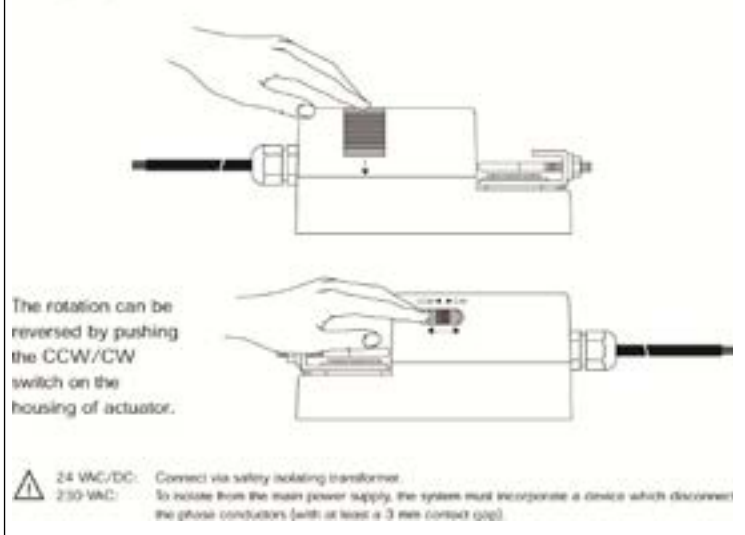
Technical Specifications

	NACA 1.1 ...20 (S)	NACA 2.2 ...20 (S)
Torque	20 Nm	
Valve Size	4.0 m ²	
Power Supply	AC/DC 24 V	AC 230V ±10%
Frequency	50...60Hz	
Power Consumption	-	
- Operating	8.0 W	
- At The End Stop	2.0 W	
For Wire Sizing	8.0 VA	
Auxiliary Switch Rating (Amp and Voltage)	3 (1.5) A / 230 V (for 24 V and 230 V)	
Protection Class	II (for 24 V and 230 V)	II (for 24 V and 230 V)
Controls Signal	2 Point and 3 Point	
Angle of Rotation	90° (95° mechanical)	
Angle of Limiting	5°...85° in 5° step	
Weight	1.2 Kg	
Life Cycle	60,000 rotation	
Sound Level	Below 45 dB	
IP Protection	IP54	
Ambient Temperature	-20°...50° as per IEC 721-3-3	
Ambient Humidity	5...95% RH	
Inventory Temperature	+70° as per 721-3-2	
Maintenance	Maintenance free	
Certification	CE and ISO 9000 EN / EEC... Requirements	

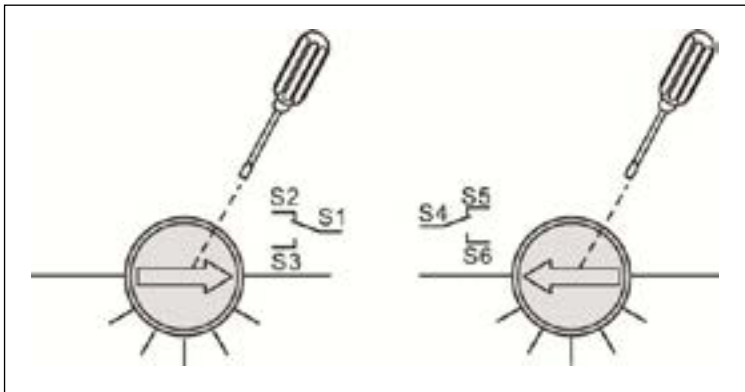
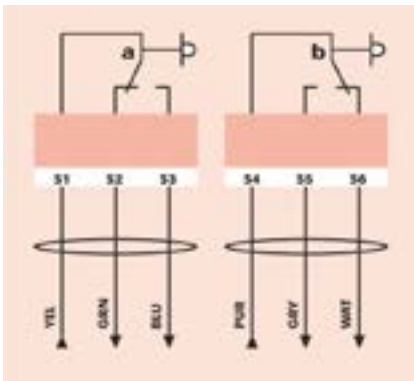
Wiring Diagram NABA 1/2...(S1) Power Supply AC/DC 24 V - AC 230 V



Changing direction of rotation NACA 1/2... (S)



Auxiliary Switches



Angle of Rotation Limiting

